

PowerConnect for SAP Solutions



PowerConnect for SAP Solutions Delivers Real-Time SAP Security and Monitoring

Keep your organization safe from cyber and internal threats.

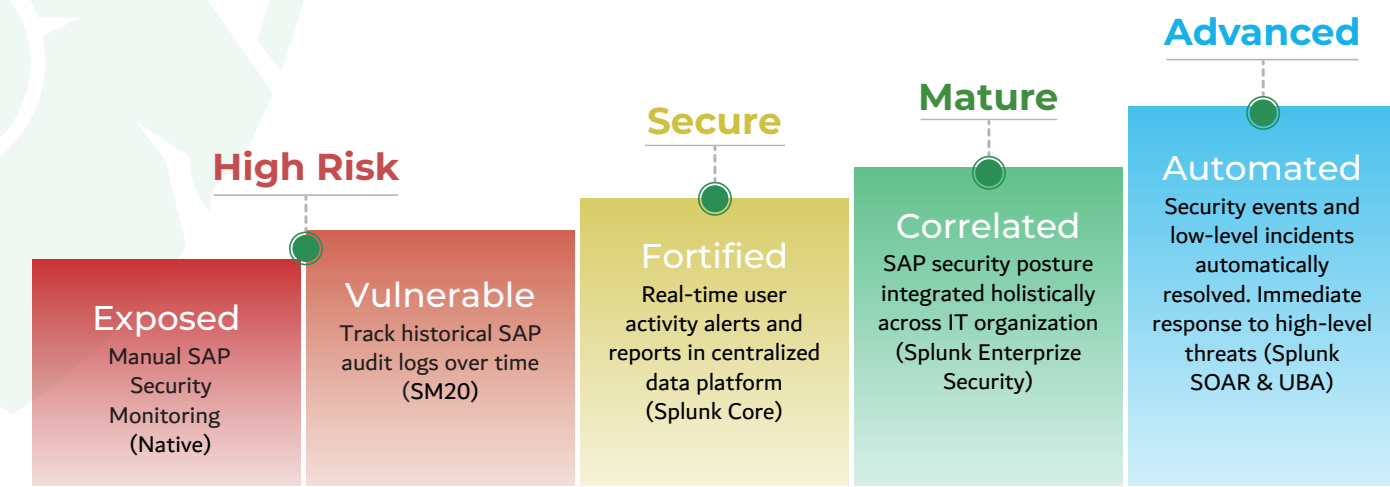
PowerConnect provides insights into SAP so that you can correlate SAP and non-SAP data. Its strengths include:

- Automating cyber alerts across all SAP system layers
- Correlating SAP events in Splunk Enterprise Security to empower your Security Operations Center (SOC)
- Streamlining compliance audits
- Improving investigation timelines
- Detecting threats including insider fraud and suspicious activity
- Real-time intrusion detection



Maturity Model for SAP Security

Ask RHONDOS how to move your organization from High Risk to Secure in two weeks.



splunk > **Partnerv**erse

SAP® Certified
Powered by SAP NetWeaver®

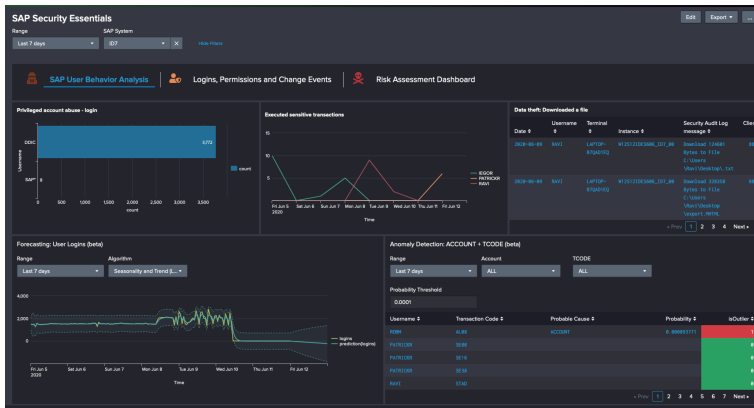


PowerConnect for SAP Solutions



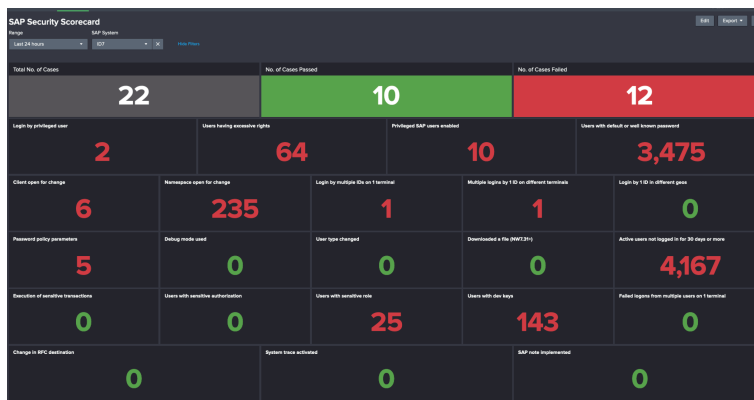
SAP Security Dashboards

Out-of-the-Box Visualizations



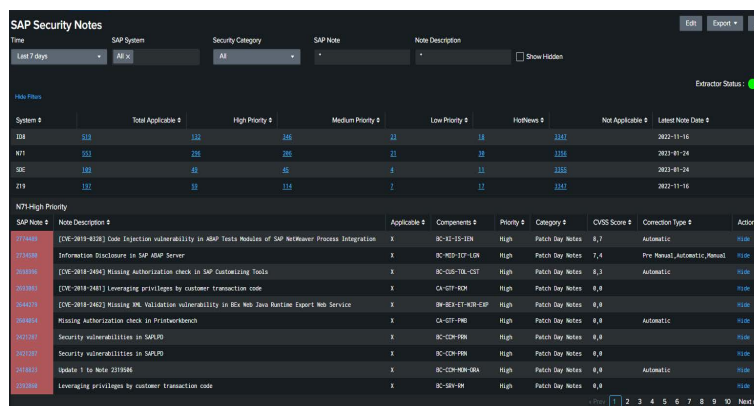
Security Essentials

- SAP User Behavior Analysis
- Logins, Permissions and Change Events
- Risk Assessment
- Suspicious Login Activity
- Anomaly Detection



Security Scorecard

- Login by Privileged User
- Users w/ Default or Known Password
- Client Open for Change
- Login by Multiple IDs on 1 Terminal
- Execution of Sensitive Transactions



User Activity and Password Status

- Relevant SAP System Security Notes
- Prioritize SNOTE on Threat Level and CVE
- Drill-down to SAP System Details
- Processing and Implementation Status
- Security Notes by Application Component ID
- Key Security Note Indicator Alerts